

FL-I with indication unit

FL-I

Voltage Detectors

Product Features

- Designed according to IEC 61243-1 (VDE 0682-411), Category S
- Indoor type 🏠
- Visual voltage indication 👁️
- No battery

The FL-I device is a voltage detector for testing the voltage on one pole. This device is designed to detect operating voltages clearly indicating either the "Voltage Present" or "No Voltage Present" state. This device does not have a built-in power source (battery) and thus no self-test function.

For transportation purposes, the insulating element can be removed from the display unit with the contact electrode.

According to the German accident prevention standard DGUV Regulation 3 (Table 1c), the device is subject to maintenance tests with minimum intervals of at least 6 years.

Technical Data	FL-I
Use	In dry conditions, normally indoors
Indication	3 red LEDs
Nominal frequency	50 Hz (optional 60 Hz)
Operating temperature	-25 to +70 °C, climatic class N and W

Nominal Voltage [kV]	Total Length a [mm]	Insertion depth b [mm]	Order No.
6	1,270	463	50-1201-001
10	1,270	463	50-1201-002
20	1,370	563	50-1201-003

Accessories	Order No.
Extension rod	see on page 66
Probe tip	
Universal plastic case	

Accessories

for Voltage Detectors and Phase Comparators

Universal plastic case

for products:	Dimensions [mm]			Order No.
	a	b	c	
FL-I, BL-I, BL-A, BS-I, BS-A, COMPARE 2.0, PG II	1,030	240	100	52-0102-001
BL-M	1,030	240	100	52-0102-005

Extension rod

for extending the handle of voltage detectors and BL-M type voltmeters.

for products:	Length [mm]	Order No.
FL-I, BL-I, BL-A, BS-I, BS-A	250	52-0108-016
FL-I, BL-I, BL-A, BS-I, BS-A, BL-M	500	52-0108-013
FL-I, BL-I, BL-A, BS-I, BS-A	1,000	52-0108-014

Probe tip

The probe provides improved penetration into oxide and paint layers.

for products:	Order No.
FL-I, BL-I, BL-A, BS-I, BS-A, BL-M, COMPARE 2.0, PG II	52-0306-002

Further probe tips for specific installation on request.

Extension rod with probe tip

for extending the insertion depth. It is not allowed to use the extension with probe tip when it's wet.

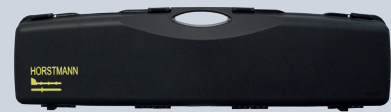
for products	Length [mm]	Order No.
BK-I, BK-A	750	52-0106-016
BK-I, BK-A	800	52-0106-017

Further probe tip for specific installation on request.

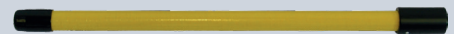
Catch fork

The catch fork provides improved handling of voltage detectors/voltmeters for contacting surfaces and holding the device.

for	Order No.
Overhead lines	52-0307-001
Switchgear units and overhead lines	52-0307-003



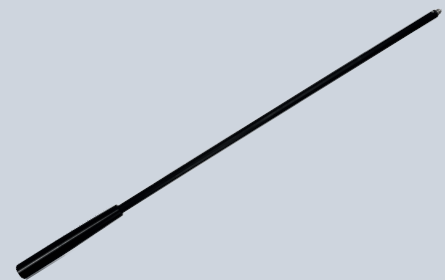
Universal plastic case



Extension rod



Probe tip



Extension rod with probe tip



Catch fork

Autorisierter Distributor



TWV Meßtechnik GmbH
 Semmelweg 31
 32257 Bünde
 Fon: 05223 / 9277 - 0
 Fax: 05223 / 9277 - 40
 info@twvbuende.de
 www.twvbuende.de

